

Pro/Animation

Animation is used to visualize the motion of a mechanism or a mechanical assembly in operation. Pro/Animation is carried out by coordinating the components of an animation sequence and playing back the animation.

1. Starting Animation

- a) Start Pro/E and open [Tutorial2b.asm](#) assembly
- b) Click **Applications > Animation**. The screen will change with the important addition of an area below the main graphics window as shown in figure 1.

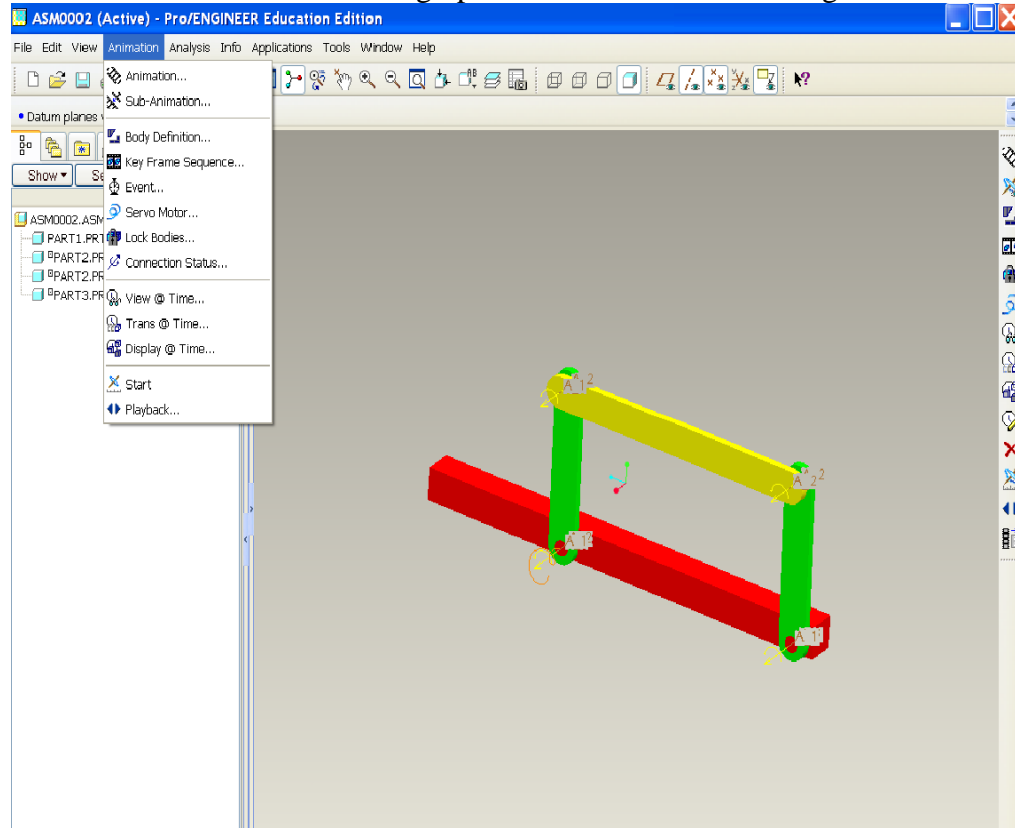



Figure 1

- c) Click **Animation > Animation** or  on the toolbar to create a new animation. The animation dialog box opens as shown in figure 2. Accept default and click close.

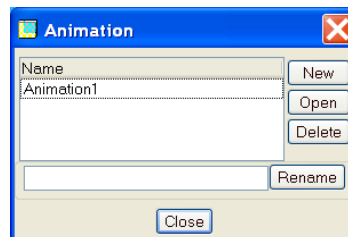
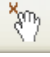



Figure 2

2. Creating the motion sequence:

- a) Click Drag icon  and the Drag dialog box opens as shown in figure 3. Press the camera icon  to create Snapshot1. Select a point on part3 by clicking with the left mouse and move to specific positions, and then take snapshots as shown in figure4. We have just defined 5 events that need to be turned into an animation.

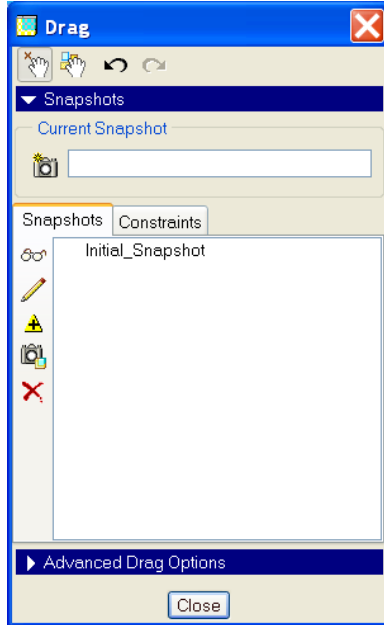


Figure3

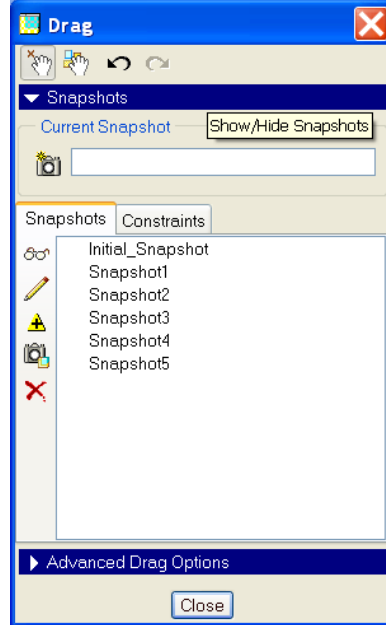
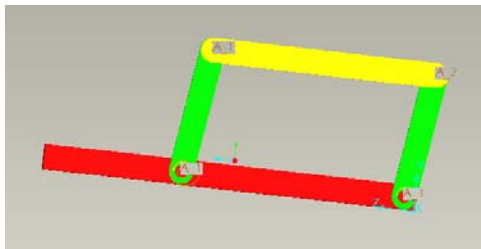
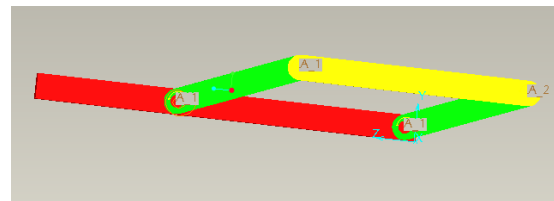


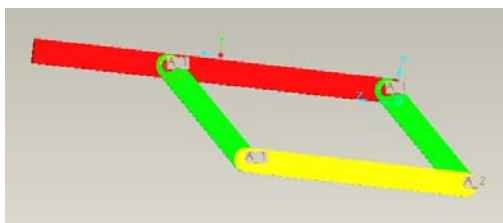
Figure 4



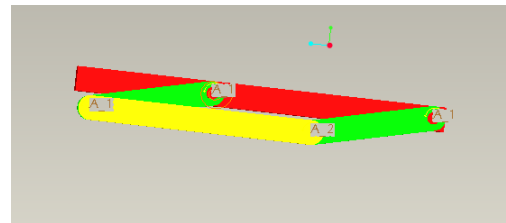
Snapshot1 position



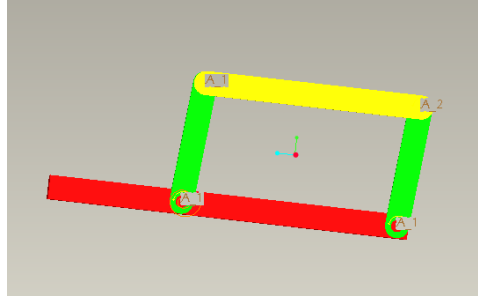
Snapshot2 position





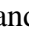
Snapshot3 position



Snapshot4 position



Snapshot5 position

- b) Click  on the toolbar or Animation > Key Frame Sequence. The Key Frame Sequence dialog appears as shown in figure 5. Type Tutorial2b in the name field. Below Key Frame Snapshot1 should be listed and time 0.000. In the dialog press  to add this Snapshot1 to the animation. Then select Snapshot2 from the list and change the time to 2 and press  again. Add Snapshot2,3,4,5 to the animation. Design Animation interpolates between these key frames to produce a smooth animation.

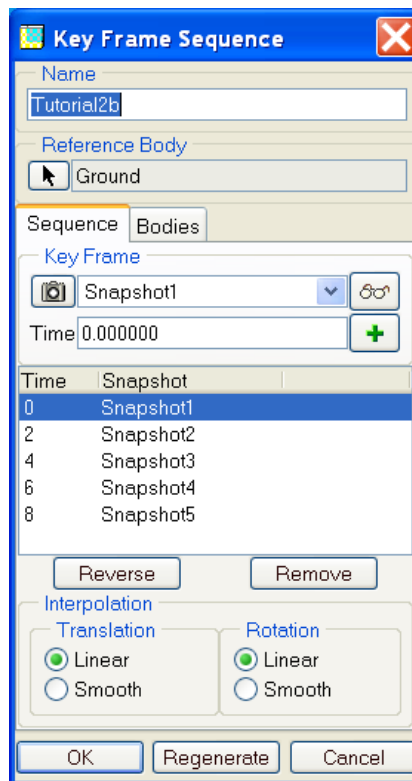



Figure 5

- c) Click  on the toolbar or Animation > Start to run the animation.

3. Saving and Viewing Results

- a) Click  on the toolbar or **Animation > Playback** to run the animation and view results. The Animate dialog box open as shown in figure 6

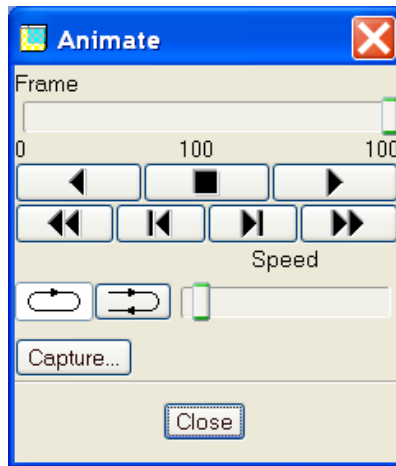



Figure 6

- b) Click  to play or click Capture to save animation file as shown in figure 7.

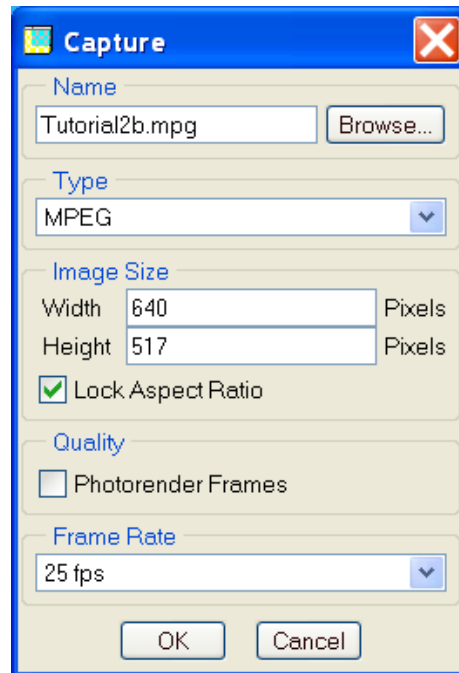


Figure 7

- c) Click to view animated simulation [tutorial2b.mpg](#)